

**DRAWING SYMBOLS**

Grid Lines  
Detail Bubble  
Building Section  
Partial Building Section  
Wall Type  
Window Type  
Door Type  
Datum Point, Elevation  
Match Line  
Equipment Symbol  
Revision Number & Cloud  
Centerline  
Property Line  
Room Number  
Existing Construction  
New Construction  
Demolition  
New/Existing Construction (1-Hr. Occupancy Separation.)  
Smoke Detector  
Fire Alarm Horn Strobe  
Fire Alarm Pull Station  
Electrical Panel  
Illuminated Exit Sign Surface Mounted - Ceiling  
Illuminated Exit Sign Surface Mounted - Wall  
Point of Vertical Dimension  
Wall Mounted Dry-Chem. Fire Extinguisher  
Thermostat

**ABBREVIATIONS**

AB	Anchor Bolt	L	Length, Long
ACOUS.	Acoustical	LAM	Laminate, Laminated
ACT	Acoustical Tile	LAV.	Lavatory
ADA	Americans with Disabilities Act	LF	Lineal Feet
ADJ.	Adjustable	LH	Left Hand
AF	Above Finished Floor	LT	Light
AGGR.	Aggregate		
AL., ALUM.	Aluminum	MAT'L	Material
ANDZ.	Anodized	MAX.	Maximum
APPROX.	Approximate	MB	Machine Bolt
ARCH.	Architectural	MECH.	Mechanical
		MEMB.	Membrane
BD.	Board	MEZZ.	Mezzanine
BTWN.	Between	MTL	Metal
BITUM.	Bituminous	MFR.	Manufacturer
BLDG.	Building	MIN.	Minimum
BLK.	Block	MIR.	Mirror
BLKG.	Blocking	MISC.	Miscellaneous
BM.	Beam	MTD.	Mounted
BOT.	Bottom		
CAB.	Cabinet	N.	North
CHAMF.	Chamfer	NIC	Not in Contract
CIP	Cast in Place	NO., (#)	Number
CLG.	Ceiling	NOM.	Nominal
CLO.	Closet	NTS	Not To Scale
CLR.	Clear		
COL.	Column	OC	On Center
CONC.	Concrete	OD	Outside Diameter
CONN.	Connection	OFF.	Office
CONSTR.	Construction	OH	Overhang
CONT.	Continuous	OPNG	Opening
CORR.	Corridor	O.T.S.	Open to Structure
CPT.	Carpet	OPNG.	Opening
CSS	Clear Sanding Sealer	OPP.	Opposite
CTSK.	Countersunk	P.BD.	Particle Board
CT	Ceramic Tile	PERF	Perforated
CTR.	Center	PL	Property Line, Plate
		P. LAM.	Plastic Laminate
DTL.	Detail	PLYWD.	Plywood
DEMO.	Demolition	PNL	Panel
DF	Drinking Fountain	PNT	Paint
DIA.	Diameter	PR.	Pair
DIAG.	Diagonal	PSF	Pounds per Square Foot
DIM.	Dimension	PSI	Pounds per Square Inch
DISP.	Dispenser	PT	Paint
DN	Down	P.T.	Pressure Treated
DR.	Door		
DS.	Downspout	R	Riser
DW	Dishwasher	RAD.	Radius
DWG.	Drawing	RBR	Rubber
		REF.	Reference, Refrigerator
E.	East	REFL.	Reflected
EA.	Each	RGTR.	Register
EXP. JT.	Expansion Joint	REINF.	Reinforced
ELEC.	Electrical	REQ.	Required
ELEV.	Elevator, Elevation	RESIL.	Resilient
EM	Entry Mat	RH	Right Hand
EMER.	Emergency	RM.	Room
ENCL.	Enclosure	RO	Rough Opening
EQ.	Equal	R.O.W.	Right of Way
EQUIP.	Equipment	RT	Resilient Tile
EXIST.	Existing		
EXP.	Expanded, Expansion	S.	South
EXT.	Exterior	SC	Solid Core
FA	Fire Alarm	SCHED.	Schedule
FD	Floor Drain	SEAL.	Sealant
FDN.	Foundation	SECT.	Section
FE	Fire Extinguisher	SHR.	Shower
F.E.C.	Fire Extinguisher Cabinet	SHT.	Sheet
FF	Factory Finish	SIM.	Similar
FIN.	Finish	SPEC.	Specification
FLR.	Floor	SQ.	Square
FLASH.	Flashing	SQ. FT.	Square Foot (Feet)
FLUOR.	Fluorescent	SQ. IN.	Square Inch (es)
FOC	Face Of Column, or Concrete	SS	Stainless Steel
FOF	Face Of Finish	STA.	Station
FOS	Face Of Slab	STD.	Standard
FRP	Fiberglass Reinforced Panel	STL	Steel
FT.	Foot or Feet	STOR.	Storage
FTG.	Footing	STRUCT.	Structural, Structure
GA.	Gauge	SUSP.	Suspended
GALV.	Galvanized	SYM.	Symmetrical
GL-Lam	Glue-Laminated	S.V.	Sheet Vinyl
GL	Glass, Glazing		
GWB	Gypsum Wall Board	T., TRD.	Tread
GYP.	Gypsum	T.&G.	Tongue and Groove
		TEL.	Telephone
HB	Hose Bibb	TEMP.	Tempered
HC	Hollow Core	TER.	Terrazzo
HD.	Head	THRESH.	Threshold
HDS.	Header	T.J.T.	Tied Joint
HDR.	Header	TOS	Top of Slab
HM	Hollow Metal	T.S.	Tube Steel
HORIZ.	Horizontal	TYP.	Typical
HR.	Hour		
HT.	Height	UL	Underwriters' Laboratories
HTG.	Heating	UNFIN.	Unfinished
H.V.A.C.	Heat/Ventilation/Air Conditioning	UON	Unless Otherwise Noted
HW	Hot Water		
HWT	Hot Water Tank	VT	Vinyl Tile
		VERT.	Vertical
ID	Inside Diameter	W.	West
IHM	Insulated Hollow Metal	W/	With
IN.	Inch	WC	Water Closet
INC.	Including	WD.	Wood
INSUL.	Insulation	WDO.	Window
INT.	Interior	W/O	Without
		WL	Water Line
JB	Junction Box		
JC	Janitor's Closet	WT.	Weight
		WWF	Welded Wire Fabric
KIT.	Kitchen	WWM	Welded Wire Mesh

**CODE ANALYSIS**

CODE: International Building Code-2006

**A. USE AND OCCUPANCY CLASSIFICATION (Chapter 3):**  
Proposed: R-2 Residential-Non Transient(NEW)(EXISTING)  
F-1 - Fish Processing (Existing)  
A-2 Assembly/Dining (Accessory)(Existing)  
S-1 Storage/Mechanical Accessory(New)

**B. TYPE OF CONSTRUCTION (Chapter 6):**  
Proposed: V-B FULLY SPRINK. Type V-B Description: Structural Elements, Exterior Walls and Interior Walls may be of Any Material Permitted by Code. (Section 602.5 & Table 601).  
Fire Resistive Rating for Building Elements (Table 601):  
Structural Frame: 0  
Bearing Walls: 0  
Exterior: 0  
Interior: 0  
Floor Construction: 0  
Roof Construction: 0

Use IBC Section 508.3.2 - Nonseparated Uses  
Refrig Equip. Rm/incidental: Separation with Sprinkler system per Table 508.2

**C. ALLOWABLE HEIGHT (Table 503): /Addition**  
Proposed: 2 Stories / 30'-0"  
Allowed (R-2): 1 Story / 40'-2 Story / 60'-0" Fully-Sprinklered (504.2)

**D. ALLOWABLE FLOOR AREA (Table 503):**  
Proposed: Level 1: 3570 s.f. - Level 1  
Level 2: 3570 s.f. - Level 2  
7140 s.f. - Total  
Allowed (basic) (R-2): 7,000 sf per Floor-NEW

Allowable Area Increases:  
Basic Table 503  
R-2 :  
(2) 7000=14000 506.1 & 506.2:

Sprinkler Increase: (3) 14,000=42000 OK  
(Increases allowed due to separation from prop. lines not calculated)

**E. OCCUPANT LOAD CALCULATIONS: (Table 1004.1.1)**

Room	Occupancy	Area	Factor	Occupant Load
Level 1/New:	"Non-Transient Res."-R-2	3570 sf	50 -gross	72 (44)*
Total:				
Level 2/New:	"Non-Transient Res."-R-2	3570 sf	50 -gross	72 (44)*
Total		7140		144 (88)*

Total Building Occupant Load:  
\*50 sf/Occupant per OSHA = 88, 88 Beds Provided

**F. Fire Resistive Rating for Exterior Walls Based on Fire Separation: (Table 602):**  
G. OTHER:  
Distance from Exterior Wall to Property Line Required Rating (Groups B/S-1)  
Less than 5' 1 Hr.  
Greater than or equal to 5', Less than 10' 1 Hr.  
Greater than or equal to 10', Less than 30' 0  
Greater than 30' 0

IBC 907-Fire Alarm and Detection Systems: Required/Provided-Manual Pull Stations Not Req. 907.2.9 3.  
IBC 1016 - Exit Access Travel Distance = 195' max. (250' maximum permitted -with sprinkler system)

**BUILDING LOADING CRITERIA**  
SNOW LOAD 40 PSF  
WIND LOAD 120 MPH EXPOSURE C  
SEISMIC Ss=25, S1=15, 2-B  
LEVEL 2 FLOOR 50 PSF

**PARTICIPANTS**

OWNER: Silver Bay Seafoods  
OPERATOR: Silver Bay Seafoods  
False Island  
Craig, AK  
CIVIL/STRUCTURAL ENGINEER: Monrean Eng. & Assoc., Ketchikan, AK 99901  
247-5920 Tele  
ARCHITECT: Stephen Peters Architects  
702 Water St.  
Ketchikan, AK 99901  
Stephen Peters, AIA  
(907) 247-7077-Tele / 247-7076 - Fax  
ELECTRICAL ENGINEER: BIDDER DESIGN  
MECHANICAL ENGINEER: BIDDER DESIGN

**SCOPE OF PROJECT**  
Construction of a new 2 level wood-framed building system, associated reinforced concrete foundation and floor slab. Interior work includes: all related partition, finish, and mechanical and electrical work.

**DRAWING INDEX**

A0	Participants, Notes, Abbreviations, Drawing Symbols
A0.1	Site Plan
A1.0	Floor Plan-Level 1
A1.1	Floor Plan-Level 2
A2.0	Enlarged Plans/Details
A2.1	Enlarged Plans/Details
A3.0	Schedules-Wall Types
A4.0	Exterior Elevations
A5.0	Building Sections
A6.0	Details

**GENERAL NOTES**

- All work shall be done in accordance with the International Building Code - 2006 (IBC), International Fire Code - 2006 (IFC), International Mechanical Code - 2006 (IMC), Uniform Plumbing Code (UPC), and National Electrical Code - 2005 (NEC), as amended by the City of Craig and the State of Alaska.
- Contractor shall verify all site conditions and building dimensions and locate underground Utilities or Miscellaneous Lines (including Fuel Oil Lines) prior to proceeding with the Work. Any variation from the Conditions and Dimensions shown on the drawings shall be reported to the Owner's Representative for resolution prior to construction.
- Written dimensions shall take precedence over scaled dimensions. Dimensions are to the centerline of Columns, to the face of framing on a new wall construction, or to the finished surface on existing walls, unless otherwise noted.
- Paint All Exposed Metal, Unless Provided with Factory-applied Coating Suitable for Exposed Finish.

702 Water St.  
PO Box 25055  
Ketchikan, AK  
99901  
Tel: 907-247-7076  
Fax: 907-247-7076

stephen peters architects spa

STATE OF ALASKA  
ARCHITECTS  
STEPHEN PETERS  
AIA  
REGISTERED PROFESSIONAL ARCHITECT

silver bay seafoods bunk house  
false island  
craig, alaska

A0.1

BP02-11

DATE 02.20.11  
BY

702 water st.  
PO box 28085  
Juneau, AK 99802  
Tel: 907.586.4707  
Fax: 907.581.7076

stephen peters  
architects  
spa

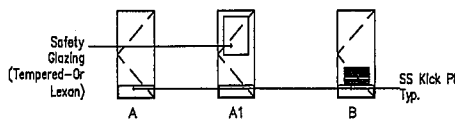


silver bay seafoods bunk house  
false island  
craig, alaska

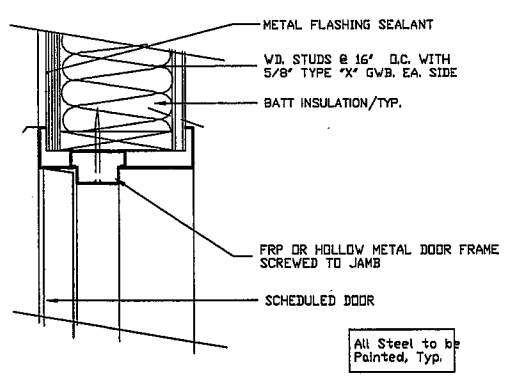
A0.1

ROOM FINISH SCHEDULE									
Location	Floor	Finish	Base	Finish	Walls	Finish	Ceiling	Finish	Notes
Level 1	Guest	Conc.	-	-	FRP	FF	FRP	FF	5/8" GWB, TYP.*
	Restroom-M/W	CT	-	CT	FRP	FF	GWB	PT	-
	Stair	-	-	-	-	-	-	-	PREFORMED TREAD-NOSING-TYP.
	Mech./Electrical	PLYWD.	Seal	RBR	FF	PLYWD.	PT	GWB	PT
Mezz-Level 2	Guest	Conc.	-	-	FRP	FF	FRP	FF	5/8" GWB, TYP.*
	Restroom-M/W	CT	-	CT	FRP	FF	GWB	PT	-
	Stair	-	-	-	-	-	-	-	PREFORMED TREAD-NOSING-TYP.
	Mech./Electrical	PLYWD.	Seal	RBR	FF	PLYWD.	PT	GWB	PT

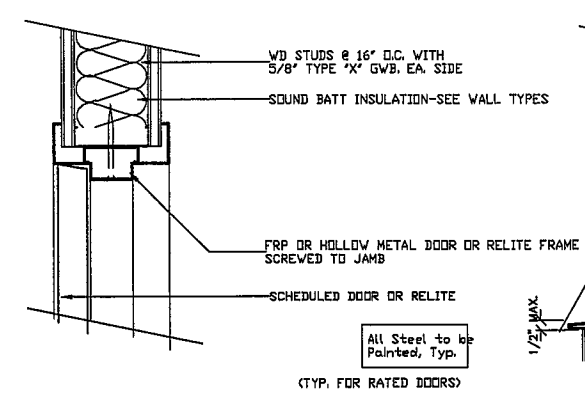
DOOR & RELITE SCHEDULE					DOOR-RELITE TYPES	
Size (W x H)	Type	Thick.	Construction		Remarks	
			Door	Frame		
① 3'0"x6'8"	A1	1-3/4"			Exterior Entry Door*	
② 3'0"x6'8"	A1	1-3/4"			Exterior Entry Door*	
③ 10'0"x12'0"	C	-			-	
④ 3'0"x7'0"	B	1-3/4"			*	
⑤ 3'0"x7'0"	A	1-3/4"			Privacy Lock at Restroom Drs.*	
⑥ 3'0"x7'0"	A1	1-3/4"			Interior*	
⑦ 6'0"x8'0"	D	-	HM	HM	-	



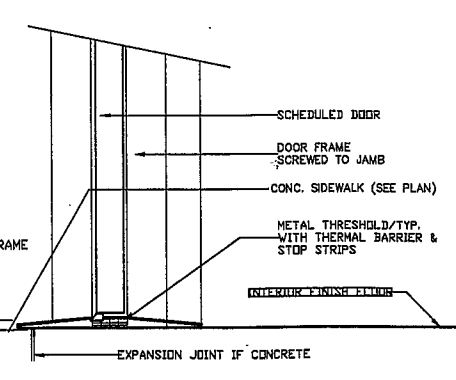
\*PROVIDE ACCESSIBLE HARDWARE-TYP.  
NOTE: DETAIL D1, D2 TYP-SIM., D3 ALL EXTERIOR TYPE A&B DRS-TYP.



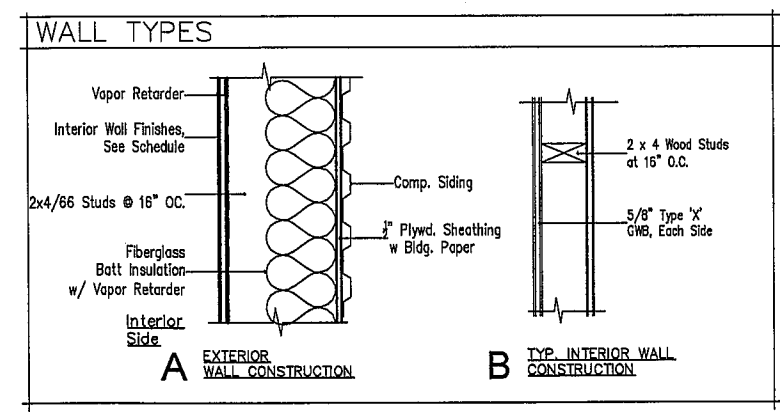
D-1 TYP. HM. JAMB/HEAD SIM  
3'-1"



D-2 TYP. HM. JAMB/HEAD SIM-INT.  
3'-1"

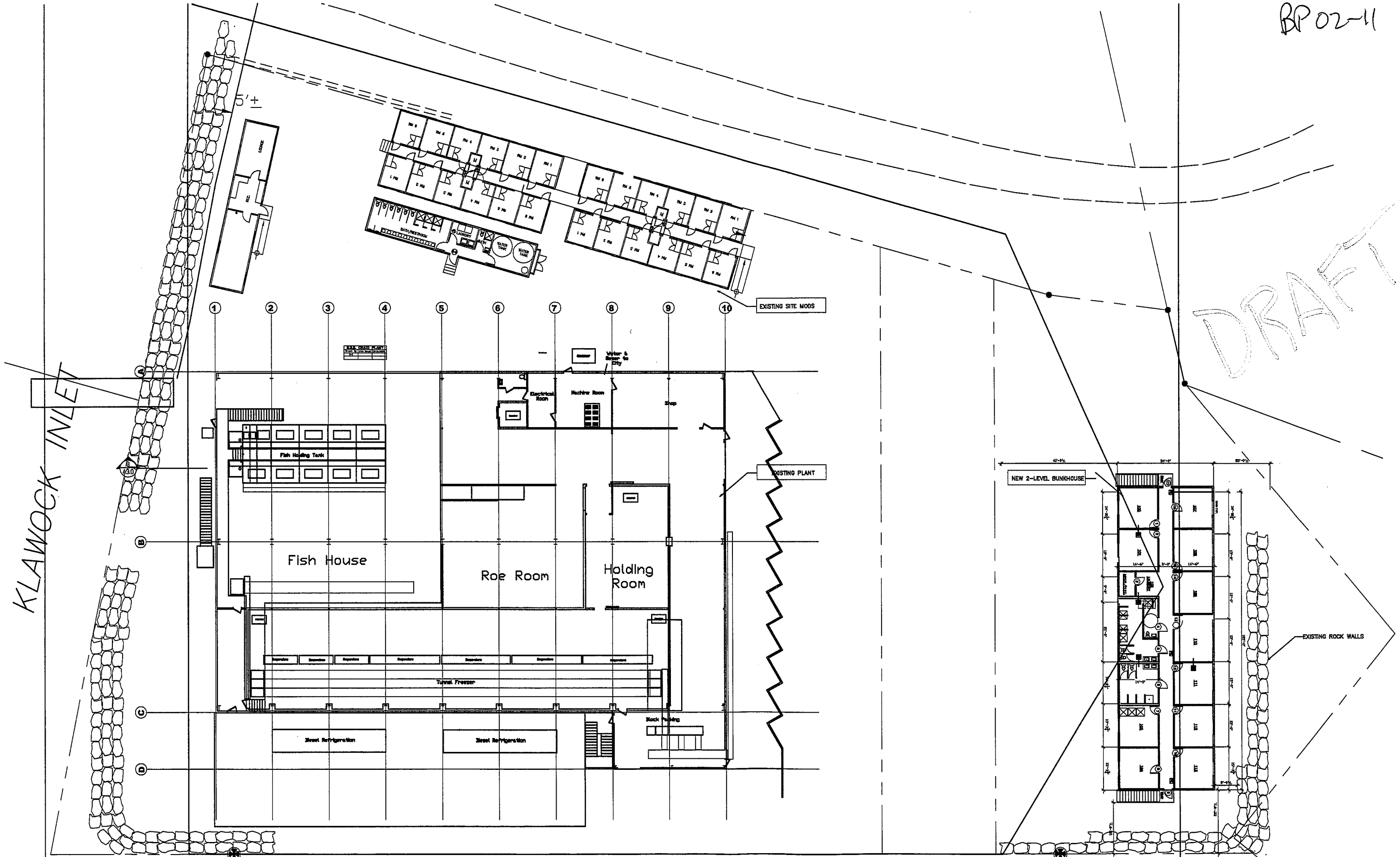
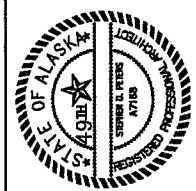


D-3 THRESHOLD  
3'-1"



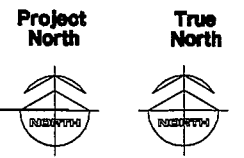
SHEET NOTES:  
1) All Exterior Walls are to be Wall Type A, U.O.N.

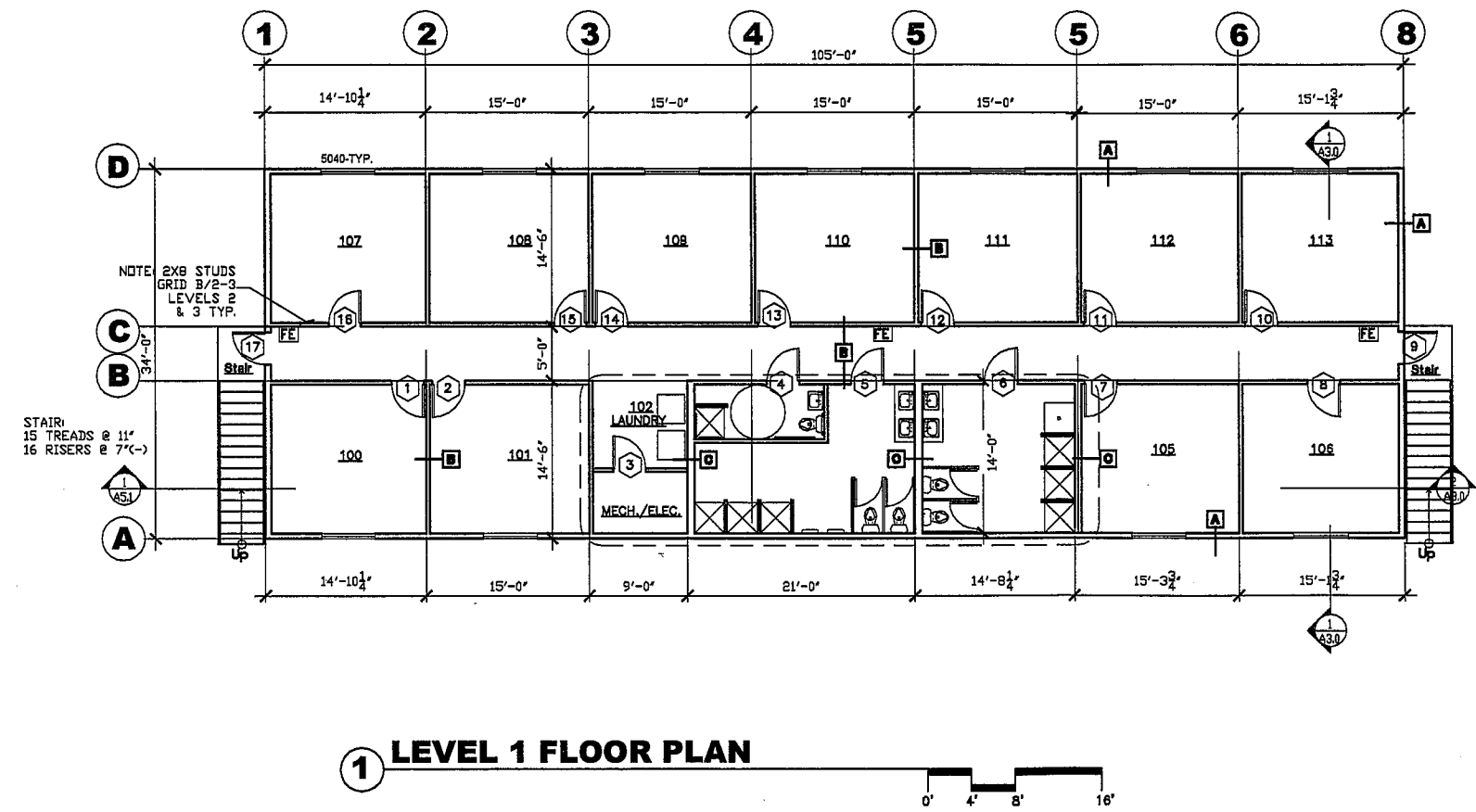
DRAFT



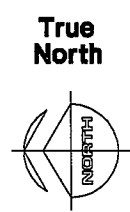
DRAFT

1 Site Plan  
1" = 32'-0"





DRAFT



BP 02-11

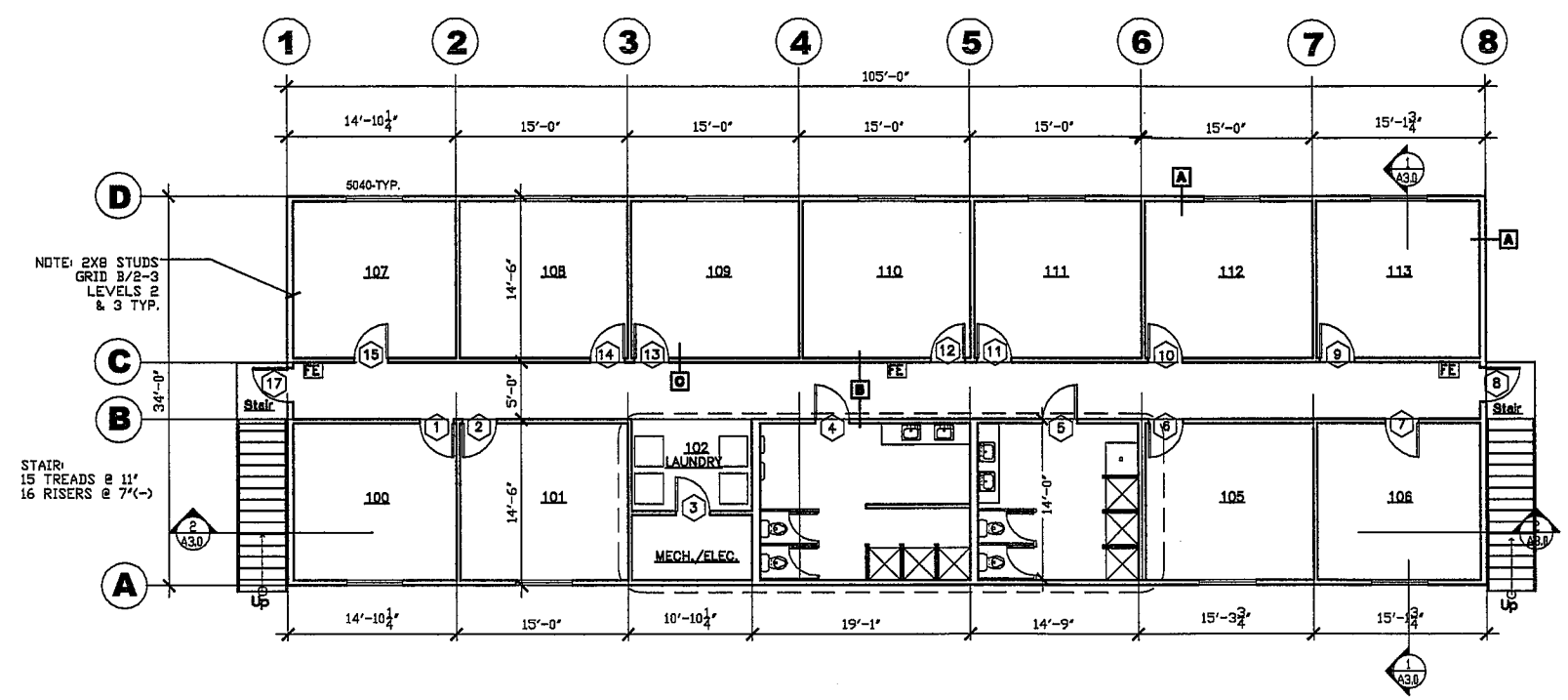
02.111  
4/4  
1/16

702 water st.  
po box 250333  
 Anchorage, AK 99501  
 Tel: 807.247.7078  
 Fax: 807.247.7078

stephen peters  
architects  
spa



silver bay seafoods bunk house  
false island  
craig, alaska



NOTE: 2X8 STUDS  
GRID B/2-3  
LEVELS 2  
& 3 TYP.

STAIR:  
15 TREADS @ 11'  
16 RISERS @ 7'(-)

1 LEVEL 2 FLOOR PLAN



DRAFT

True North



Project North



BP 02-11

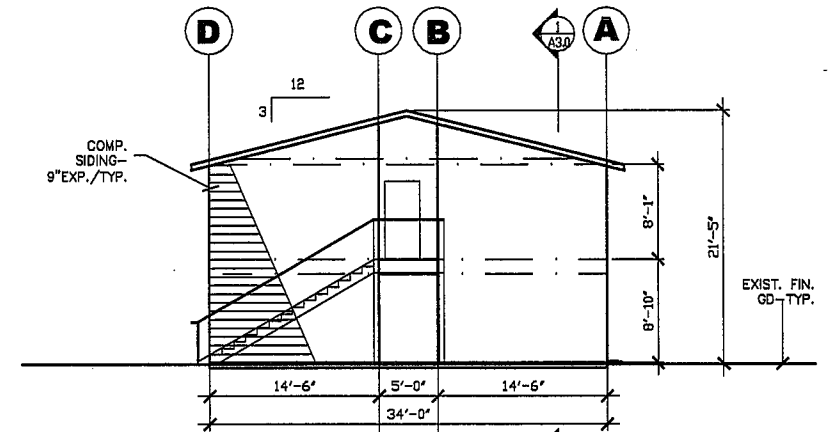
02.11  
1/8"

702 water st.  
po box 25085  
kenai, ak 99541  
tel: 907.241.0776  
fax: 907.241.0776

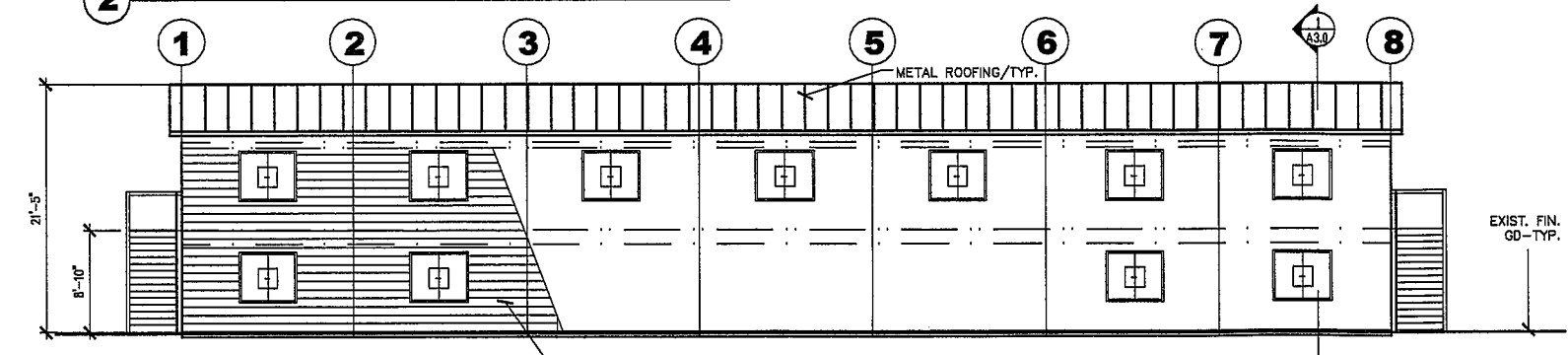
stephen peters  
architects  
spa



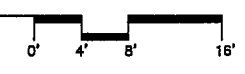
silver bay seafoods bunk house  
false island  
craig, alaska



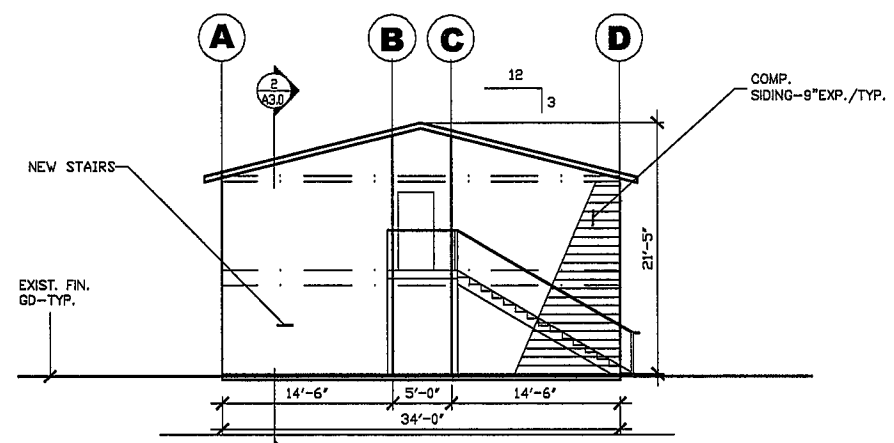
2 SOUTH ELEVATION



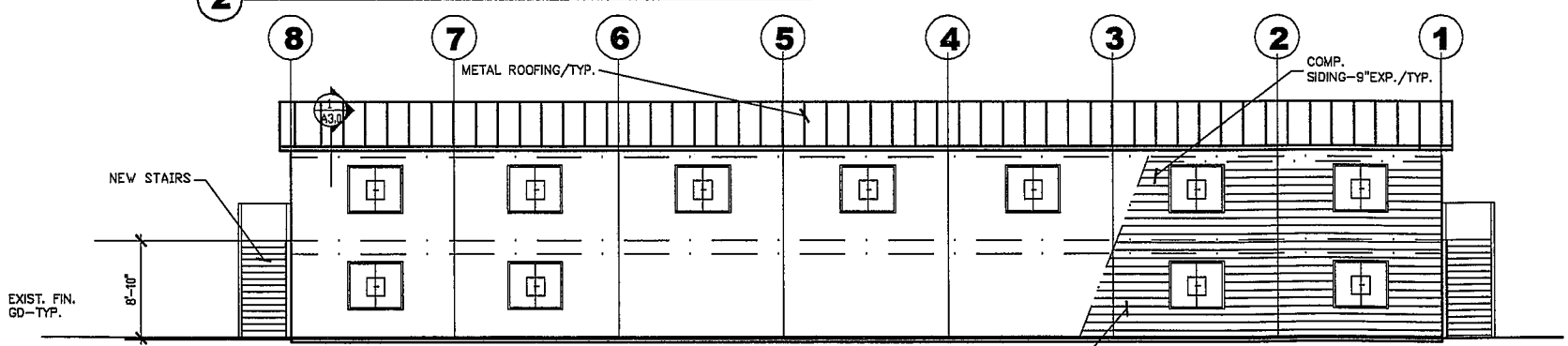
4 WEST ELEVATION



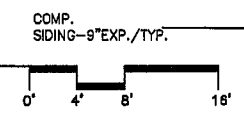
DRAFT



2 NORTH ELEVATION



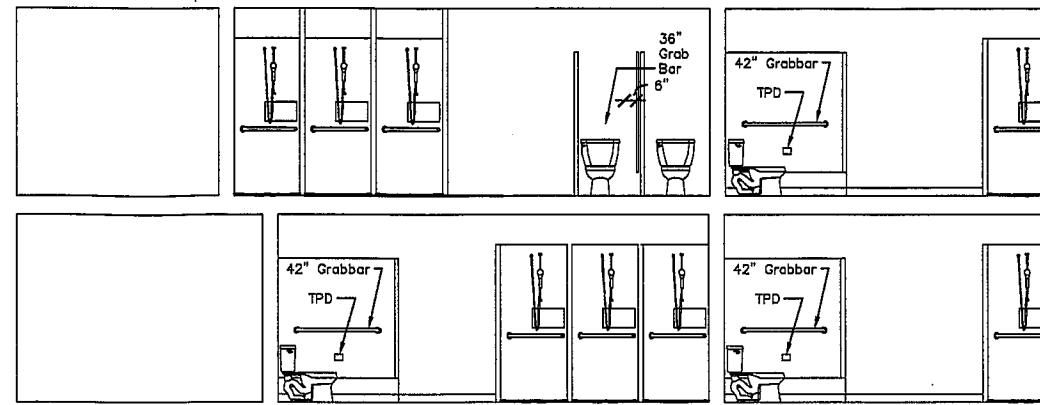
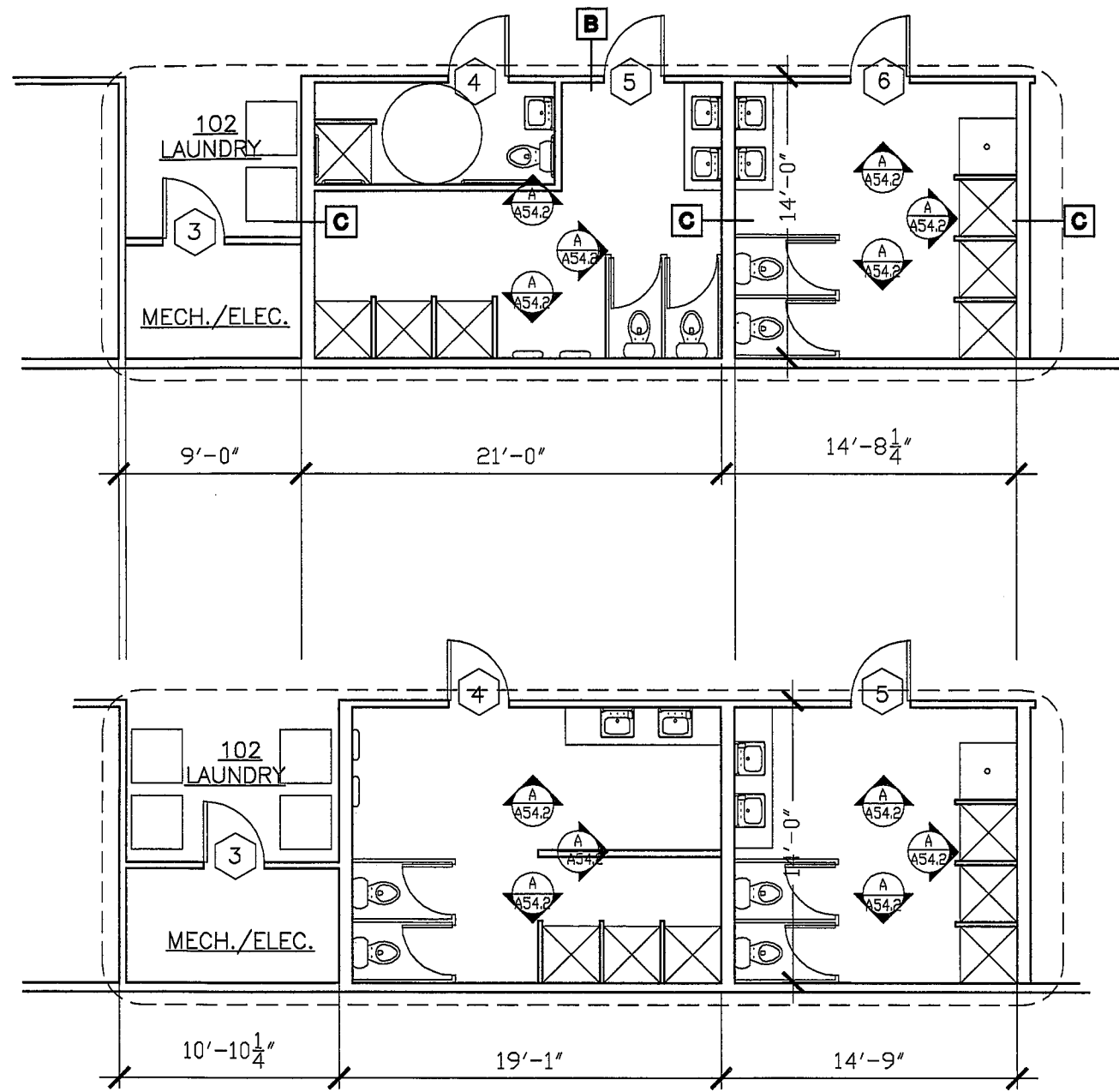
4 EAST ELEVATION



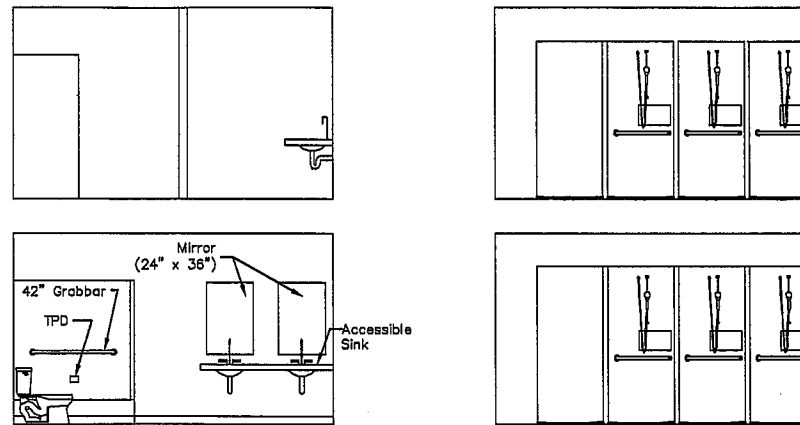
DRAFT



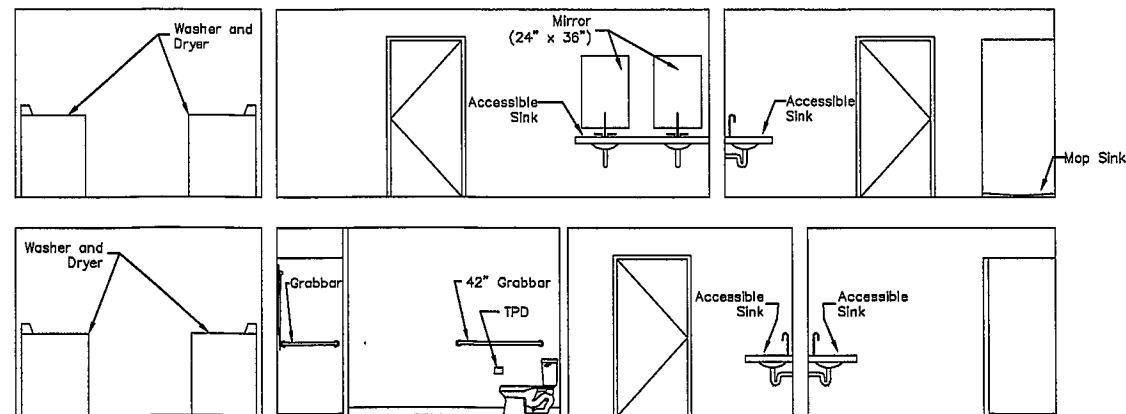




WEST



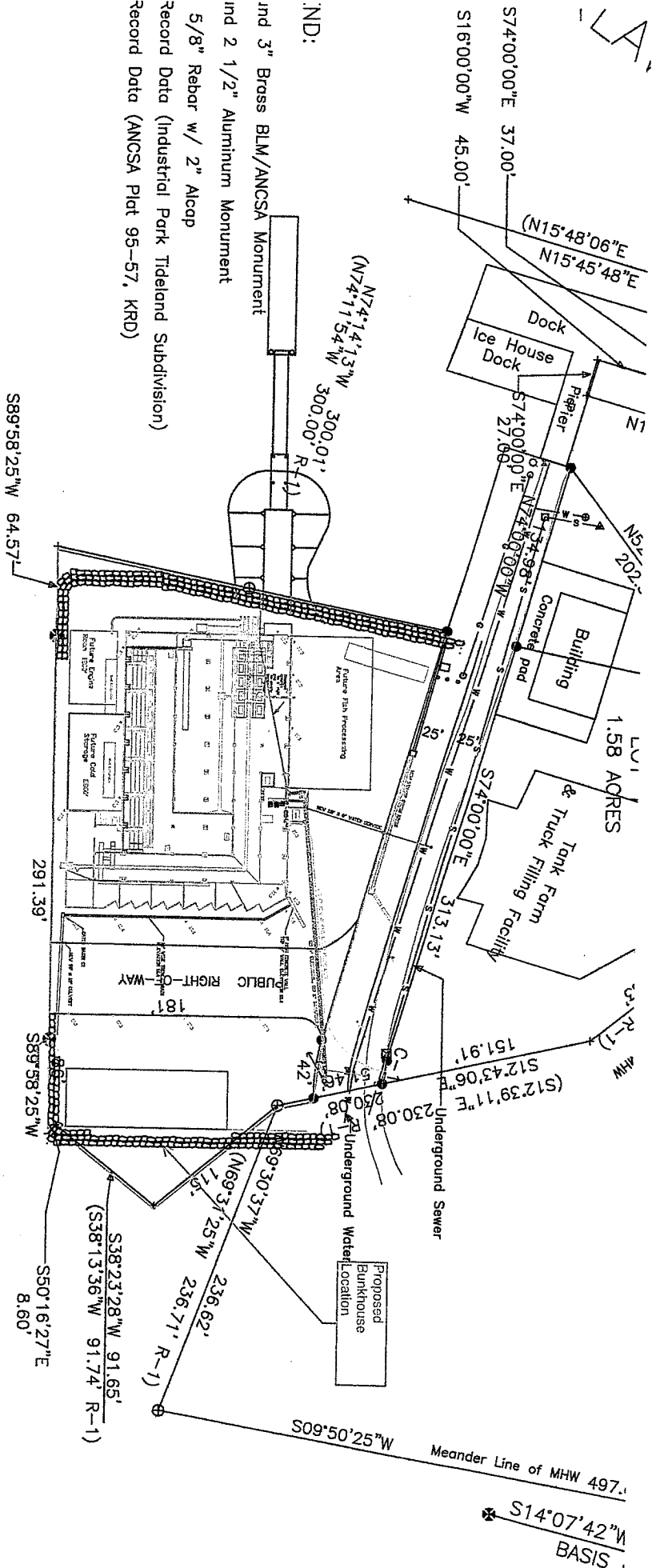
SOUTH



EAST

DRAFT





- IND:
- Ind 3" Brass BLM/ANCSA Monument
- Ind 2 1/2" Aluminum Monument
- 5/8" Rebar w/ 2" Alcap
- Record Data (Industrial Park Tideland Subdivision)
- Record Data (ANCSA Plat 95-57, KR D)

DATE OF IMPROVEMENTS

ements have been examined and approved by the city this \_\_\_\_\_ day \_\_\_\_\_, 20\_\_\_\_.

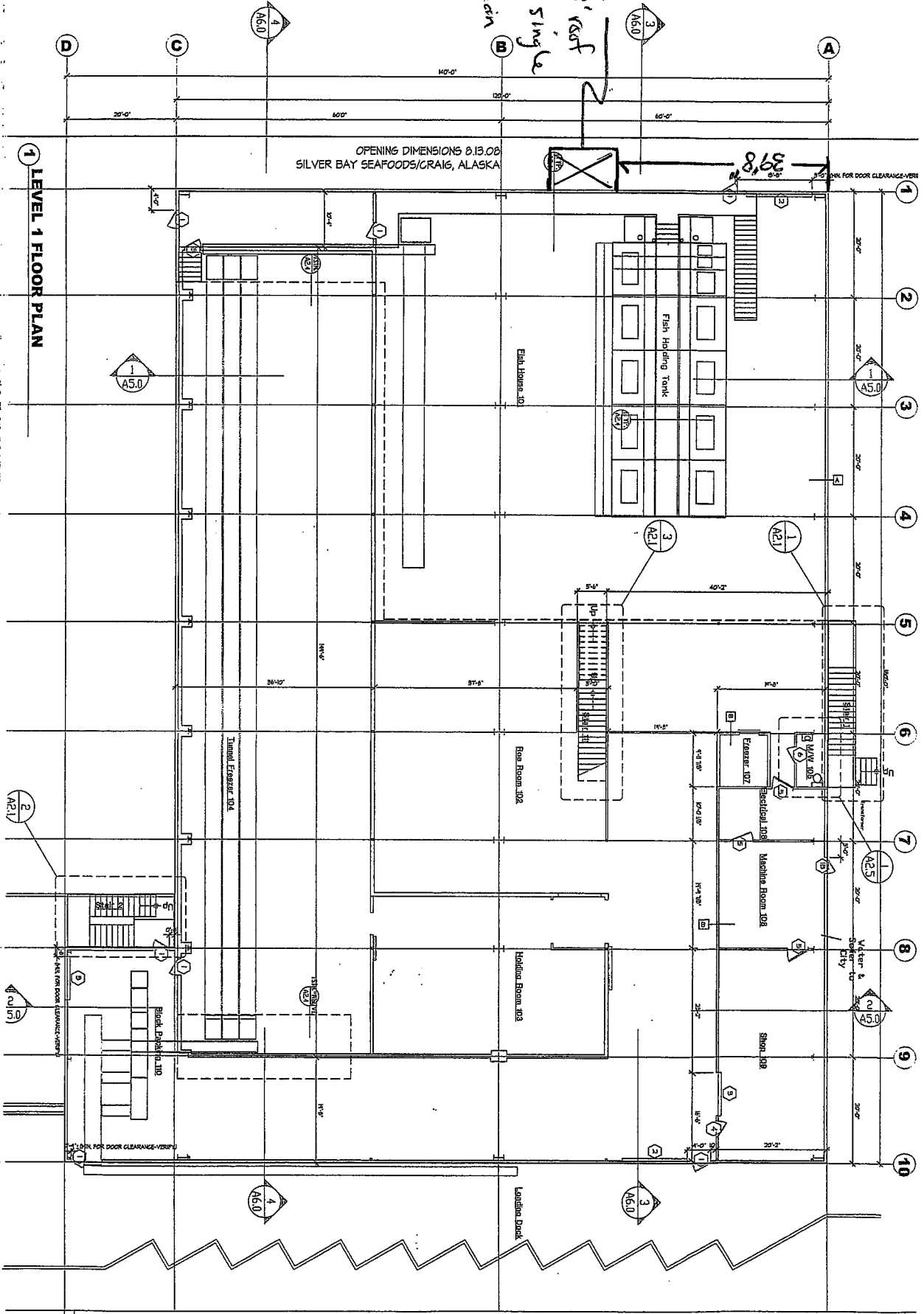
APPROVAL BY CITY OF CRAIG PLANNING COMMISSION

This final subdivision plat has been reviewed and approved in accordance with the Craig Land Development Code - Subdivision Ordinance. All dedications to the public have been inspected and accepted by the City of Craig.

and Approved: PUBLIC WORKS DIRECTOR \_\_\_\_\_

\_\_\_\_\_

8'x12'  
Shed, 9' roof  
height, single  
3068 main  
door.



LEVEL 1 FLOOR PLAN

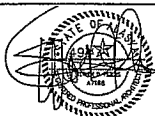
Sliding to match existing building.  
Green delta roofing, 15' L 12' roof

Shed to house salt water  
chlorination pumps.

2.7.11  
Kevin Barry

A1

silver bay seafood plant  
false island  
craig, alaska



stephen peters  
architects  
spa

702 water at  
po box 23083  
anchorage, al 99501  
tel 907.247.7077  
fax 907.247.7078

07/08  
08/08  
PERMIT  
9.08.08  
10.07.08

BP 02-11



State of Alaska  
Department of Public Safety  
Division of Fire and Life Safety

Sean Parnell, Governor  
Joseph A Masters, Commissioner

May 17, 2011

Lucas Turi  
Simplex Grinnell  
1901 Anka Street  
Juneau, AK 99801

RECEIVED  
MAY 23 2011  
CITY OF CRAIG  
ALASKA

SUBJECT: Silver Bay Seafoods False Island Bunkhouse - Fire Alarm System  
CITY: Craig  
PLAN REVIEW: 2011June1037  
OCCUPANCY: R-2  
2006 INTERNATIONAL BUILDING AND FIRE CODE

Dear Lucas Turi:

Plans for the Fire Alarm System have been reviewed by this office for conformity with the State Fire Safety Regulations and are hereby approved. Enclosed is a certificate of approval that must be posted on the premises until the project has been completed according to the approved plans and all regulations have been adhered to.

**A copy of the test certificate must be forwarded to this office within (30) thirty days of completion. Any changes to the approved plans must be submitted to this office for review and approval.**

Approval of submitted plans is not approval of omissions or oversights by this office or noncompliance with any applicable regulations of the Municipal Government.

It must be understood that the inclusion of and compliance with State Fire Safety Regulations does not preclude the necessity of compliance with the requirements of local codes and ordinances.

If we can be of further assistance in this matter, please feel free to contact us at the address below.

Sincerely,

Robert Plumb  
Deputy Fire Marshal  
Life Safety Inspection Bureau

cc: Supervisor  
Craig Building and Fire Official  
Enclosure: Approval Certificate